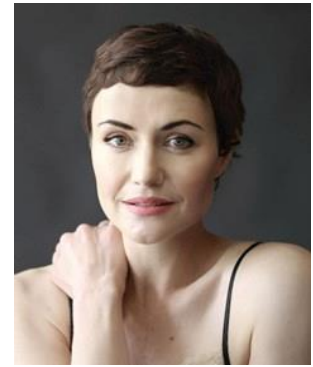




Artist Connection



Rolanda Marais

Height: 1,68m

Hair: Green

Eyes: Brown

Training: UCT Bilingual Performers Degree in Speech and Drama - UCT Honors Degree Afrikaans & Dutch Literature

Languages: English, Afrikaans

Film

| | | |
|-------------------------------|-----------------------|-------------------------|
| Die Seemeeu | Nina Zarechnaya | Dir. Christiaan Olwagen |
| Johnny is nie Dood nie | Lise -Lead | Dir. Christiaan Olwagen |
| Bloodline | Jane St Claire | Dir. Darryl Roodt |
| It's not a Question | Mother | Dir. Samir Mallal |
| Free State | Fransien | Dir. Sallas de Jager |
| Ballade vir 'n Enkeling | Lead - Lena Snr | Dir. Quentin Krog |
| Die Ballade van Robbie de Wee | Louise | Dir. Darryl Roodt |
| Wolwedans in due Skemer | Lead - Sonja | Dir. Jozua Malherbe |
| Out on a Limb | Amy Hardcastle - Lead | Theta Films |
| Dead Easy | Taryn | Dir. Neal Sundstrom |
| Global Effect | Sacha | Buckle Productions |
| Begger Man Thief | Lead Female | Dir. Greg Watt |
| Hope After Hope | Lead - Wendy | Dutch Film |
| Borderline | Waitress | Dir. Evelyn Purcell |
| Rent a Baby | Mother | Germany |
| Styxx | Doreen | Dir. Alex Wright |

Television

| | | |
|-----------------------------|----------------------|------------------------|
| Waterfront | Anna | Dir. Jaco Boucher |
| High Rollers - Season 1,2,3 | Lead - Analine King | Rous House Productions |
| Terug na Egipte | Lead - Gertjie | Dir. Human Stark |
| Bloedbroers | Ingrid Retief - Lead | Kyknet |
| Donkerland | Lead - Emily | Dir. Jozua Malherbe |
| Intersextions | Lead | Quizzical |
| Generations | Guest Performer | MMSV Productions |

Tel: (011) 791 6813 / (011) 791 6846 / (010) 591 0283

Email: info@artistconnection.co.za / jurgie@artistconnection.co.za

www.artistconnection.co.za



Artist Connection



Rolanda Marais

Television

| | | |
|---------------------|------------------------|-------------|
| Vlug na Egipte | Lead - Gertjie | Stark Films |
| Binnelanders | Lead - Stefanie | Mnet |
| Charlie Jade | Lead - Blues Paddock | Canada |
| Zero Tolerance | Lead - Hannelie de Kok | SABC |
| 7de Laan | Lead - Penny Hattingh | SABC 2 |
| S.O.S | Shireen | Etv |
| Lied van die Lappop | Lead - Milla | SABC 2 |

Theatre

| | | |
|-------------------------|----------------------|-------------------------|
| DOGMA | Lead - Salome | Dir. Christiaan Olwagen |
| Wie Drink Wat | Lead - Bruid | Dir. Christiaan Olwagen |
| Hedda Gabler | Lead - Hedda | Dir. Andre Stoltz |
| Romeo & Juliet | Juliet | Dir. Fred Abrahamse |
| Romeo & Julia | Julia | Dir. Marthinus Basson |
| Two Gentlemen of Verona | Julia | Dir. Marthinus Basson |
| Mama Madea | Kreousa | Dir. Marthinus Basson |
| Rooikoppetjie | Rooikoppetjie | Dir. Marthinus Basson |
| Aars | Electra | Dir. Marthinus Basson |
| Moerkind | Maria | Dir. Charles Fourie |
| Elke Dium 'n Koning | Rolanda Marais | Dir. Jaco Bouwer |
| East | Mum | Dir. Chris Weir |
| Flat Panic | Marna | Dir. John Trengove |
| Waterbreek | Anna | Dir. Thain Torres |
| More | Odette - Mother Mary | Dir. Matthew Wilde |
| Next Exit | Poetry Programme | Dir. Sandra Themming |
| Variations | Anna K - Young Girl | Dir. Liz Mills |
| City of Paradise | Chorus | Devised |
| Salome | Kapedosier | Dir. Sandra Themming |

Awards

Silwerskerm Film Festival nomination for Best Actress in a Film for Johnny is nie Dood nie.

ATKV nomination for Best Actress in TV series for Terug na Egipte

Fleur De Cap nomination for Best Actress in Theatre for Die Seemeeu



Artist Connection



Rolanda Marais

Awards

Fiesta Award for Best Actress in Theatre for Die Seemeeu and DOGMA

Kanna Award - Best Actress for Theatre in DOGMA

Vita Award for Best Newcomer for Elke Duim'n Koning

ATKV - Award for Best actress in a Soap, Drama series For Binnelanders

ABSA, KKNK, Kanna award Nomination For Best actress in theatre Production 'DOGMA'